

“Changing the World for Children Exposed to Domestic Violence”

Casey Gwinn, Esq.
President, National Family Justice Center Alliance
September 29, 2014

Websites: www.familyjusticecenter.com
www.strangulationtraininginstitute.com
www.camphopecalifornia.com



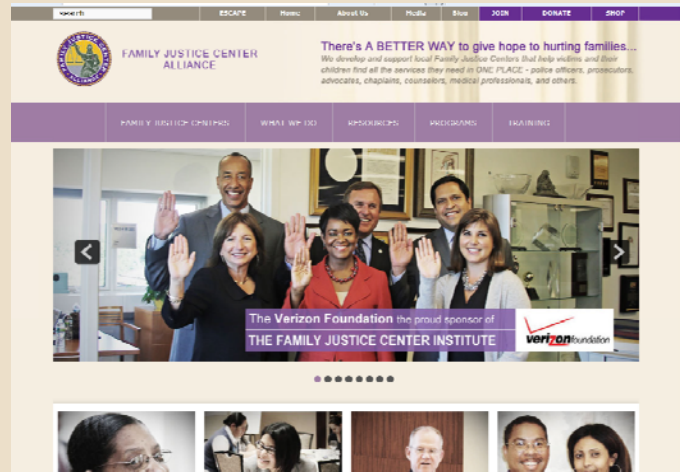
FAMILY JUSTICE CENTER
ALLIANCE

Kayden Brooke Orender



FAMILY JUSTICE CENTER
ALLIANCE

www.familyjusticecenter.com



FAMILY JUSTICE CENTER
ALLIANCE

National Family Justice Center Alliance



"Health Matters, Hope Heals: What Every Professional Needs to Know About Trauma"



FAMILY JUSTICE CENTER
ALLIANCE

We Know What Grows in Our Communities...



Ronald Wayne Frye killed his landlord over a rent dispute...



FAMILY JUSTICE CENTER
ALLIANCE

We don't spend enough time connecting the final product...

Back to the roots...



FAMILY JUSTICE CENTER
ALLIANCE

Ronald Wayne Frye, Age 9 October 1968



Executed in North Carolina on August 31, 2001



FAMILY JUSTICE CENTER
ALLIANCE

We know officers are killed in the line of duty...

But we rarely investigate the
relationship history of the killer...



FAMILY JUSTICE CENTER
ALLIANCE

And we honor so many...



 FAMILY JUSTICE CENTER ALLIANCE

But...

We have missed the intersections...

2013 Treasure Valley (ID) Study

- Evaluated ten officer-involved critical incidents where officer shot a suspect or suspect shot an officer
- 80% of suspects with domestic violence history
- Non-fatal strangulation history in 30%
- Based only on public records history
- More research needed
- We all should be looking for it/tracking it



FAMILY JUSTICE CENTER
ALLIANCE

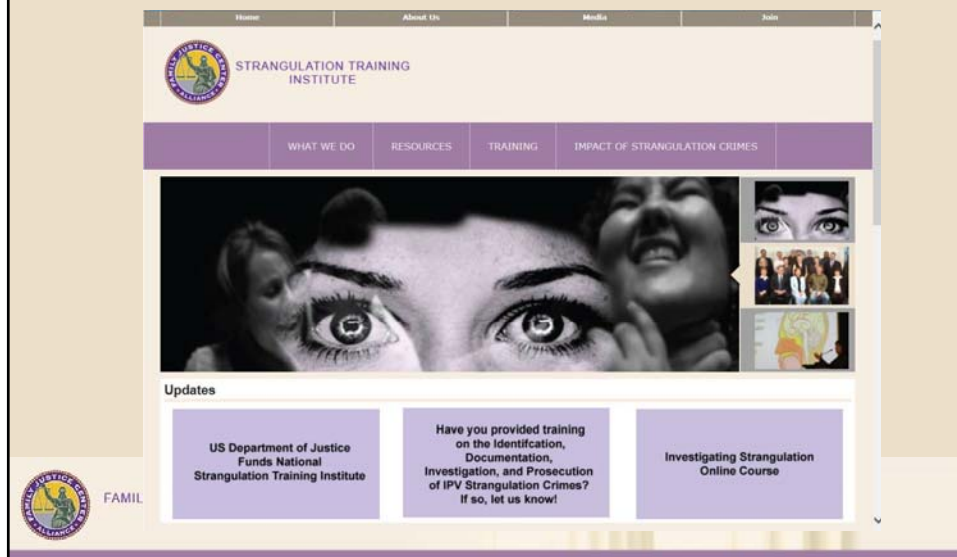
Riverside County District Attorney's Office 2013 Study Gerald Fineman, J.D.

- Law enforcement officers killed in the line of duty
- 1993-2013
- 50% of officers were killed by a criminal suspect with a public records act history of strangulation assault against a woman in a prior relationship



FAMILY JUSTICE CENTER
ALLIANCE

www.strangulationtraininginstitute.com



Looking for the Root

- Fatherless children; Abandonment; Decline of the nuclear family; Decline of religion; Increase in divorce; Exposure to violence and abuse (Fagan, 1995)
- Support: 10% increase in community in single parent homes – 17% increase in delinquency cases; Intact two parent families raise healthy, non-violent children even in high crime areas.
- Racism; Poverty; Lack of education; Exposure to violence and abuse;
- Support: High rates of incarceration for children of color; As education declines, incarceration increases;
- But this still does not go to the root...



FAMILY JUSTICE CENTER
ALLIANCE

The Root of All Crime

Traces back to the brain...to the motor...the command center for every human being...



FAMILY JUSTICE CENTER
ALLIANCE

“It is the not the finger that pulls the trigger. It is the brain. It is not the penis that rapes. It is the brain.”

Dr. Bruce Perry
Child Trauma Academy
Houston, Texas



FAMILY JUSTICE CENTER
ALLIANCE

“In all my years as a District Attorney, I never prosecuted a capital murder case where the defendant did not have a serious history of child abuse.”

Mike Green

New York State Vision of Criminal Justice Services
Former Monroe County District Attorney (Rochester,
New York)



FAMILY JUSTICE CENTER
ALLIANCE

“In the 12 years I have run four prisons for the state Department of Corrections, I have never personally met an inmate who did not grow up in a home with child abuse, or domestic violence, or some mix of both.”

California State

Department of Corrections Manager



FAMILY JUSTICE CENTER
ALLIANCE

Ghosts from the Nursery

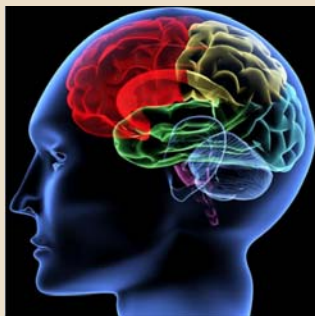
“If the caregiving relationship is inadequate or traumatic, especially in the first thousand days of life when the brain is chemically and structurally forming, the part of the brain that allows the baby to feel connected with another person can be lost or greatly impaired. A child may mature lacking the ability to attach or to relate in any profound way to others. Absent adequate nurturing by an emotionally competent caregiver, the baby faces an unpredictable tide of unregulated emotions... We have yet to recognize that if a child's experiences are pathological and are steeped in chronic fear, the very capacities that mitigate against violent behavior – including empathy and the capacity for self-regulation of strong emotions – can be lost.”

Robin Karr-Morse and Meredith Wiley



FAMILY JUSTICE CENTER
ALLIANCE

The Neurobiology of Trauma



FAMILY JUSTICE CENTER
ALLIANCE

Latest Research on the Children of Domestic Violence Homes

- Study was based on the National Youth Survey Family Study, a national sample of 1,683 families, and followed 353 second-generation parents and their third-generation offspring over a 20-year period.
- Children from 3 of 4 families ended up becoming victims as adults
- Children from 4 of 5 families ended up becoming perpetrators as adults
- <http://dev.cjcenter.org/files/cvi/Generation%20Cycles%20IPVforweb.pdf>
- http://dev.cjcenter.org/files/cvi/Gang_Crime_Victimization_final.pdf



FAMILY JUSTICE CENTER
ALLIANCE

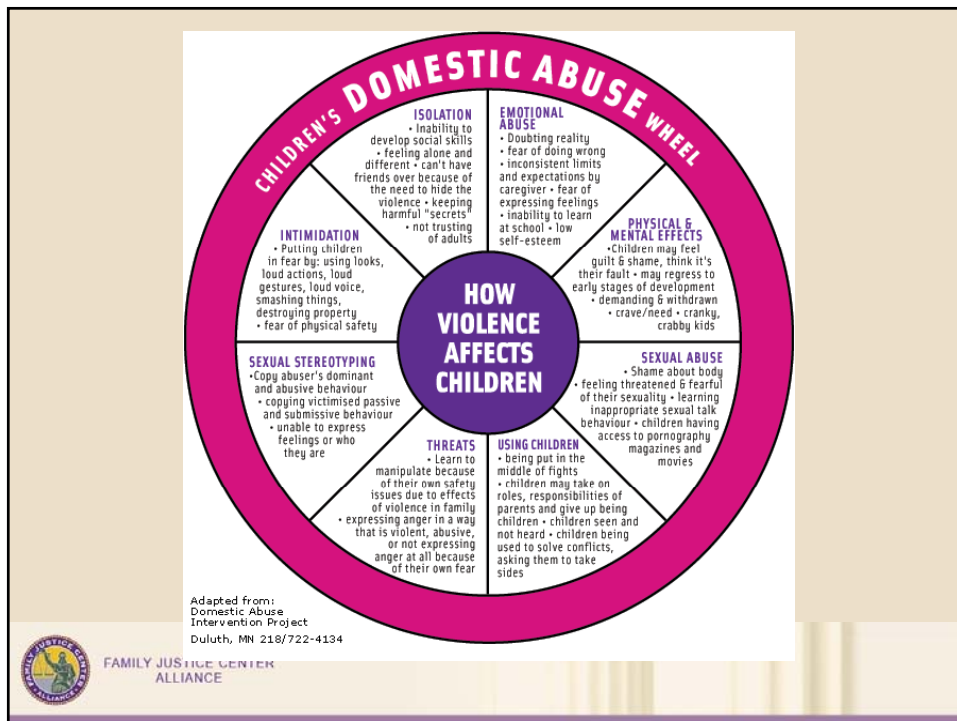
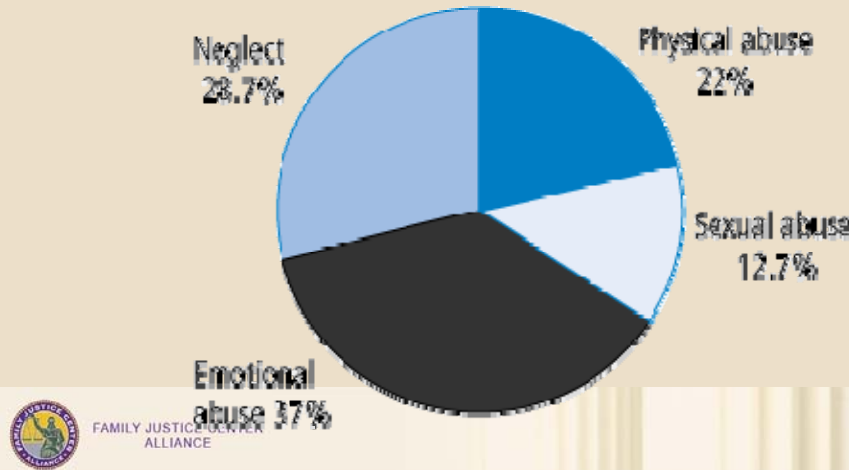
Bishop Desmond Tutu

What is Justice?



FAMILY JUSTICE CENTER
ALLIANCE

Percentage breakdown of primary substantiated maltreatment types in Australia in 2009-10



Improving the Relationship Between Child Advocacy Centers, Family Justice Centers, and Domestic Violence Shelters

Understand the History...Looking Forward...



FAMILY JUSTICE CENTER
ALLIANCE

FJC Vision Statement

- **A future where...**
 - **All the needs of adult and child victims are met**
 - **Children are protected**
 - **Violence fades,**
 - **Batterers/abusers are held accountable**
 - **Economic justice increases,**
 - **Families heal and thrive,**
 - **Hope is realized, and**
 - **We ALL work together...**



FAMILY JUSTICE CENTER
ALLIANCE

Brief Background on the Child Advocacy Movement

- Rev. Charles Brace the Orphan Trains
- Mary Ellen Wilson Case – 1874 NYC (Led to the founding of the New York Society for the Prevention of Cruelty to Children)
- Modeled after the New York Society for the Prevention of Cruelty to Animals
- 1876 – NYSPCA and NYSPCC merged to form the American Humane Society to protect animals and children



FAMILY JUSTICE CENTER
ALLIANCE

“The child welfare movement was born in paternalism and focused solely on the protection of children, not the protection of battered women”

Charles Wilson, Director, Chadwick Center for Children and Families, San Diego (former Director of the National Children's Advocacy Center in Huntsville, Alabama)



FAMILY JUSTICE CENTER
ALLIANCE

Brief Background on the Domestic Violence Movement

- Survivor-Driven
- Born in a Rejection of Paternalism
- Primarily focused on the protection of battered women
- Not aligned with the child welfare movement in its philosophy, history, or operations...



FAMILY JUSTICE CENTER
ALLIANCE

The History

- The Women's Movement
- The Battered Women's Movement
- The Civil Rights Movement
- The Modern Domestic Violence Movement
- The Choice to Recruit the Criminal Justice System
- The Choice to Reach Out to Men
- The Evolution Toward Co-Located Services



FAMILY JUSTICE CENTER
ALLIANCE

The Future...The Greenbook Initiative...Child
Advocacy Centers focusing on DV Victims...Child
Advocacy Centers and Family Justice Centers...

Working collaboratively...



FAMILY JUSTICE CENTER
ALLIANCE

The Greenbook Initiative

U.S. Department of Justice
Office on Violence Ag. Women
Go to: www.thegreenbook.info



FAMILY JUSTICE CENTER
ALLIANCE

Six Communities

- [El Paso County, Colorado](#)
- [Grafton County, New Hampshire](#)
- [Lane County, Oregon](#)
- [St. Louis County, Missouri](#)
- [Santa Clara County, California](#)
- [San Francisco County, California](#)



FAMILY JUSTICE CENTER
ALLIANCE

Key Greenbook Players

- Technical Assistance partners:
- [American Public Human Services Association](#)
- [Family Violence Prevention Fund](#)
- [National Council of Juvenile and Family Court Judges, Family Violence Department](#)
- Evaluation partners:
- [Caliber Associates](#)
- [Educational Development Center](#)
- [National Center for State Courts](#)



FAMILY JUSTICE CENTER
ALLIANCE

Focus of Greenbook

- Child Maltreatment
- Domestic Violence
- Role of Domestic Violence Organizations
- Role of Child Welfare Organizations
- Guidelines/Principles for Best Practices
- Called for Co-Located, Multi-Agency Service Models to Best Address Needs of Victims and Their Children



FAMILY JUSTICE CENTER
ALLIANCE

And when we don't do it well...



The Dumas Children



FAMILY JUSTICE CENTER
ALLIANCE

Reaching the Vision
is not an event...

It is a long journey...



FAMILY JUSTICE CENTER
ALLIANCE

How often are they present?
1992 New York Study

Children Are Present in 68% of
All Reported Domestic Violence
Incidents



FAMILY JUSTICE CENTER
ALLIANCE

The Reality

- 3.3 to 10 million children witness domestic violence each year
- 54% of all child abductions occur in the context of domestic violence
- 75% of the children of divorced parents report witnessing domestic violence
- 70% of shelter children are victims of physical abuse or neglect
- Brain development is dramatically impacted by trauma exposure



FAMILY JUSTICE CENTER
ALLIANCE

DV/CA Co-Occurrence The Research

- 6% of pregnant women are battered (CDC Study) – Means 240,000 pregnant women are battered every year in the U.S.
- Children present in 68% of all DV incidents
- 3.3 to 10 million children witnessing DV each year
- Co-Occurrence – 30-60% depending on study you look at
- San Diego – 1989 – 49% of Adult Care Givers with Suspected Child Abuse were also victims of DV
- Children of DV/CA homes are 6x more likely to commit suicide; 24x more likely to be sexually assaulted; 60x more likely to be involved in delinquent behavior
- Male children witnessing any DV: At least three times more likely to become abusers
- Children of most violent homes: 1000x more likely to become abusers
- Dr. Harry Chugani: *"We can have individuals who, based on early experiences, who are in effect 'hard-wired' for negative behaviors."*
- Dr. Bruce Perry: Persistent fear response; hyper-arousal; disassociation; disrupted attachment process; neglect; lack of stimulation – results in limited capacity for empathy, learning disabilities, depression, lack of neural development and brain growth.
- Resiliency research...is very promising...(Werner, Smith 1982, 1998, 2001); (Katz & Windecker-Nelson, 2006)
- ACE Study – www.cestudy.org
- (www.childwelfare.gov – Child Welfare Information Gateway)



FAMILY JUSTICE CENTER
ALLIANCE

Resources

- **The Link Research Project: Understanding the Link Between Child Maltreatment and Woman Battering**
www.mincava.umn.edu/link
 Provides up-to-date information on current research, practice, and promising intervention models with families experiencing domestic violence and child abuse and neglect.
- **Resource Center on Domestic Violence: Child Protection and Custody**
www.ncjfcj.org/dept/fvd/
 Comprehensive publications and technical assistance to the fields of domestic violence, child protection, and custody regarding policy and practice issues inherent in work with children exposed to domestic violence.
- **Child Witness to Violence Project**
www.childwitnessstoviolence.org
 Offers general information about the effects of domestic violence on children, statistics, and the *Report on Violence and Children*.
- **The "Greenbook" Federal Initiative**
www.thegreenbook.info
 Provides resources and information regarding the six federally funded communities implementing the National Council of Juvenile and Family Court Judges guidelines, *Effective Intervention in Domestic Violence & Child Maltreatment Cases: Guidelines for Policy and Practice*.



FAMILY JUSTICE CENTER
ALLIANCE

But the Silos are difficult to
penetrate...



FAMILY JUSTICE CENTER
ALLIANCE

The Family Violence Program at Children's Hospital

- 1989 - Assigned Advocates to Battered Women to Support Them in Family Court, Criminal Court, Juvenile Court
- Where Child Abuse and Domestic Violence Were Present in the Relationship
- Court Support
- Safety Planning



FAMILY JUSTICE CENTER
ALLIANCE

Partnership with City Attorney and Family Violence Program

- Longer sentences with advocates in court
- Study showed victims were less likely to recant with support from FVP
- Prior history far more extensive than prior police contacts
- High prevalence of sexual assault
- Identification of high risk cases was easier



FAMILY JUSTICE CENTER
ALLIANCE

Informed by...

- Child Advocacy Centers
- Evidence-based practices
- Trauma-Informed Care Work
- Multi-Disciplinary Work of DV Shelters
- Survivors
- Long history of collaborative work between the domestic violence and child abuse communities in San Diego County



FAMILY JUSTICE CENTER
ALLIANCE

Fundamental Principle:

You cannot protect children if you
do not protect their mothers...



FAMILY JUSTICE CENTER
ALLIANCE

And on the other side... a key question:

- Are you planning for the safety of mothers in all child abuse cases?
- Do you have specially trained domestic violence advocates working as full partners in your child advocacy system?
- Are DV Survivors Central to Your CAC Vision and Child Welfare Vision?
- Beware of the Benevolent Batterer Syndrome



FAMILY JUSTICE CENTER
ALLIANCE

Promising Practices

- Co-locating domestic violence advocates in child welfare offices for case consultation and supportive services
- Developing cross-system protocols and partnerships to ensure coordinated services and responses to families – E.g. The Greenbook Initiative (www.thegreenbook.info)
- Co-located service delivery such as the Family Justice Center model
- Instituting family court models that address overlapping domestic violence and child abuse cases
- Cross training domestic violence and child welfare advocates regularly
- Creating domestic violence units in child welfare agencies with survivor-centered service delivery philosophy
- Case conferencing with DV professionals on co-occurrence cases to avoid removal of children whenever possible
- Trauma Informed Care Models:
<http://www.childrescuebill.org/VictimsOfAbuse/RespondingHodas.pdf>



FAMILY JUSTICE CENTER
ALLIANCE

The Ugly

- Child Welfare taking children without multi-disciplinary efforts to protect mom and hold the abuser accountable...
- Child Welfare ordering mom to get a restraining order, go to couples counseling, or go into a shelter when she is not in danger...
- The State replacing the abuser in the life of the victim...



FAMILY JUSTICE CENTER
ALLIANCE

Innovative Approaches

- National Children's Advocacy Center
www.nationalcac.org
- Ouachita Parish FJC
www.fjcouachita.org
- St. Joseph County FJC Vision
- Hillsborough County FJC
- San Diego FJC/YWCA/Chadwick CAC Vision



FAMILY JUSTICE CENTER
ALLIANCE

What are the basics?

- Identify all the children at the scene
- Ask all adult care providers of abused children about DV
- Plan for the safety of the children...with the children...
- Plan for the safety of adults when investigating child abuse
- Provide child care – during services for adults
- Dramatically expand services for young children and teens
- And...



FAMILY JUSTICE CENTER
ALLIANCE

Give Children a Voice



FAMILY JUSTICE CENTER
ALLIANCE

Key Question: Are You Planning for the Safety of the Children in All DV cases?

- First by...listening to the Children. Then...
- Safety Plans for Kids
- Support Groups for Kids



FAMILY JUSTICE CENTER
ALLIANCE

Trauma Informed Care **STRENGTHS BASED APPROACHES AND PROMOTION OF RESILIENCY**

- Identifying and Recognizing Child Strengths
- Promoting Resilience in Children
- Common Strengths of Maltreated Children
- Identifying and Recognizing Family Strengths
- Useful Strengths Based Assumptions



FAMILY JUSTICE CENTER
ALLIANCE

What are new models?

- Ouachita Parish, LA – CAC and FJC in adjoining buildings + Close Partnership with Shelter
- National Child Advocacy Center – DV Services on the Campus (Huntsville, AL)
- Nampa, ID and Boise, ID FJCs – Certified as a CAC + Integrated shelter services
- San Diego – DV Advocates in Juvenile Ct.
- St. Joseph County Partnership – FJC and CAC
- Others – Child Welfare Professionals on-site at FJC
- MDT Models with CA/DV Professionals Working Together



FAMILY JUSTICE CENTER
ALLIANCE

What are innovative programs?

- Teen support groups/Teen Coordinator in FJC Model
- Trauma-Informed therapeutic interventions with children (E.g. Cognitive behavioral therapy, Parent-Child Interactive Therapy)
- Mentoring programs for children
- Camping programs – Camp HOPE
- Partnerships with the faith community
- Partnerships with Boys and Girls Clubs, YMCAs, Recreation Programs, Homework Clubs, Music and Arts Programs



FAMILY JUSTICE CENTER
ALLIANCE

Trauma-Informed Approaches

- **“A program, organization, or system that is trauma-informed:**
- Realizes the widespread impact of trauma and understands potential paths for recovery;
- Recognizes the signs and symptoms of trauma in clients, families, staff, and others involved with the system;
- Responds by fully integrating knowledge about trauma into policies, procedures, and practices; and
- Seeks to actively resist re-traumatization.”
- A trauma-informed approach can be implemented in any type of service setting or organization and is distinct from trauma-specific interventions or treatments that are designed specifically to address the consequences of trauma and to facilitate healing.” (SAMHSA)



FAMILY JUSTICE CENTER
ALLIANCE

Six Key Principles of a Trauma-Informed Approach (SAMSHA)

- A trauma-informed approach reflects adherence to six key principles rather than a prescribed set of practices or procedures. These principles may be generalizable across multiple types of settings, although terminology and application may be setting- or sector-specific:
- Safety
- Trustworthiness and Transparency
- Peer support
- Collaboration and mutuality
- Empowerment, voice and choice
- Cultural, Historical, and Gender Issues



FAMILY JUSTICE CENTER
ALLIANCE

Alex



FAMILY JUSTICE CENTER
ALLIANCE

Alex



FAMILY JUSTICE CENTER
ALLIANCE

Zach



FAMILY JUSTICE CENTER
ALLIANCE

Zach



FAMILY JUSTICE CENTER
ALLIANCE

Camp HOPE 2013



www.facebook.com/camphopecalifornia
www.camphopecalifornia.com



FAMILY JUSTICE CENTER
ALLIANCE

Camp HOPE 2014



Camp HOPE 2014



FAMILY JUSTICE CENTER
ALLIANCE

Camp HOPE Video 2014



FAMILY JUSTICE CENTER
ALLIANCE

What is HOPE?



"Hope means to trust in other people, to believe in yourself and to work together so you can conquer whatever you are going after,"

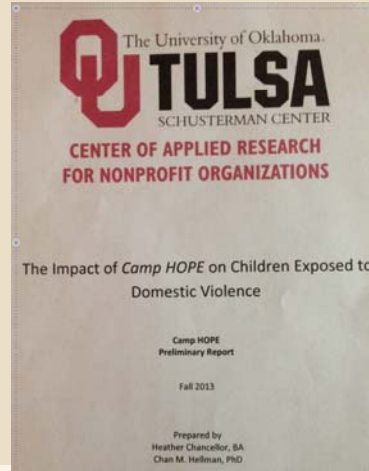
-Kylie, camper



FAMILY JUSTICE CENTER
ALLIANCE

Camping and Mentoring

- What will you do together besides intervention?
- What will your prevention strategy include?
- How can the Camp HOPE California model benefit your children receiving services after exposure to DV?
- OU- Tulsa Evaluation Report 2013 – Camping and Mentoring Produces HOPE in Children!
- HOPE Scale Pre-Post: 25.5 to 27.6



FAMILY JUSTICE CENTER
ALLIANCE

Children's Hope Scale

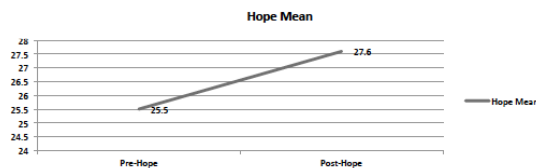
Impact of Camp Hope on Children's Hope.

Pre-Test Post-Test Comparison

In order to examine the change in hope scores from pre testing to the post test, we conducted a Paired-Samples T-Test to determine if the change was statistically significant. The results indicated a statistically significant increase in the means ($t = -3.856$, $df = 110$, $p < .001$). Further more, the magnitude of this change is considered small ($d = -.37$).

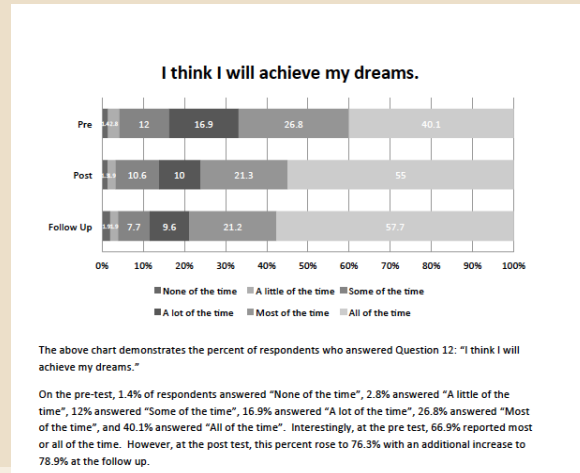
Group	Mean	Std. Dev.	df	t-value	Significance
Pre-Hope	25.5	5.9	110	-3.856	< .001*
Post-Hope	27.6	5.5			

N = 94, $p \leq .05$



FAMILY JUSTICE CENTER
ALLIANCE

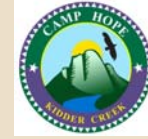
One of the Key Findings



FAMILY JUSTICE CENTER
ALLIANCE



Camp HOPE California



- First Pilot Project Camping Venue – Yreka, CA (www.kiddercreek.org) 2013
- Second Camping Venue Under Development: Bethel Ranch (Arroyo Grande, CA)
- Social Enterprise Model – Sustainable camping program for children exposed to DV with profits from business ventures at Bethel Ranch
- www.facebook.com/camphopecalifornia
- www.camphopecalifornia.com



FAMILY JUSTICE CENTER
ALLIANCE

2013 Pilot Project Completed

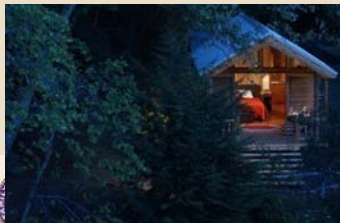
- Kidder Creek Camp – Five weeks (www.kiddercreek.org)
- Eight Participating Family Justice Centers
- 375 children plus youth counselors and volunteers
- Specialized curriculum with one adult or counselor for every two children
- Used HOPE Index Evaluation Tool from Dr. Chan Hellman



FAMILY JUSTICE CENTER
ALLIANCE

[E-Book Prospectus on Bethel Ranch](#)

http://issuu.com/familyjusticecenteralliance/docs/bethel_ranch_camp_hope_prospectus_2013





FAMILY JUSTICE CENTER
ALLIANCE



FAMILY JUSTICE CENTER
ALLIANCE



Reminders As We Conclude

- The Most Effective Homicide Prevention Happens Early...
- We Need to be Experts in Trauma...
- We Must Reject Silos
- We Must See the Connections and Intersections
- Social and Public Policy Must Challenge Us To Engage "Before" and "Earlier"
- We must engage in intervention and prevention simultaneously
- There are all the resources we need to dramatically reduce intimate partner violence in our lifetime...
- We must dream bigger...we must aspire for more...



FAMILY JUSTICE CENTER
ALLIANCE